



Why Manufacturers Choose **ProjectManager**



Widespread manufacturing frustrations

Manufacturing has been a pillar of both the American and global economies for over 200 years. Today, there are roughly 15.7 million manufacturing employees in the US alone, making up 10% of the American workforce. From chemicals to automobiles or nearly any other product, all manufacturing teams have one thing in common: it's difficult to reach the lofty quality and compliance standards expected of them when using disjointed work management systems, particularly for remote teams.

Here are only some of the widespread frustrations that manufacturing teams face:

- ✓ Collaborating cross-functionally is difficult when multiple manufacturing sites are using disparate tools and processes
- ✓ Using different tools provides minimal transparency and slows production timelines and strategic collaborations
- ✓ Keeping track of files, data, parts and components is challenging without a single project reference point
- ✓ Integrating with other business tools and sharing documents is difficult, delaying the product's time to market

ProjectManager offers manufacturing teams the tools they need to centralize project management and ensure that their location, work style preferences or role won't become an obstacle in driving innovation and success.

ProjectManager's practical benefits for manufacturers

- 1 Plan and schedule long-term projects with ease
- 2 Collaborate in multiple project views
- 3 Track project progress to minimize bottlenecks
- 4 Manage teams and resources alongside projects
- 5 Reduce busywork with custom workflows and automation

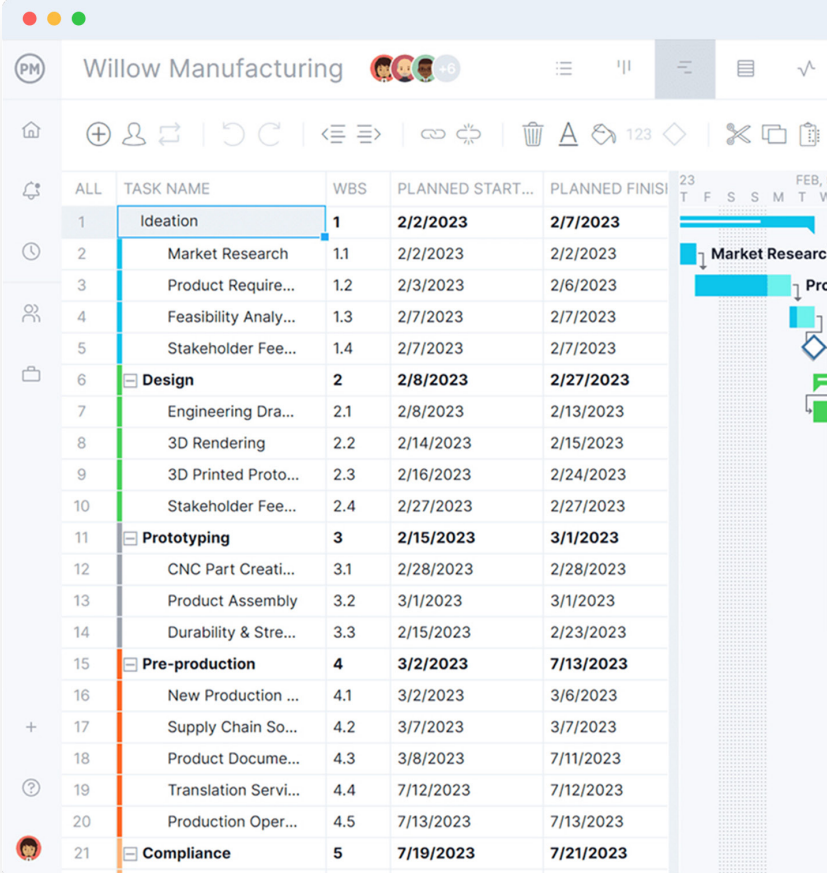
Let's look at each of these benefits in more detail.



Plan and schedule long-term projects with ease

Manufacturing projects, such as kicking off a new site or developing machinery, are often lengthy and complicated. Spreadsheets or light task management tools aren't sufficient in tracking details such as resource allocation. Planning long-term and economically viable manufacturing projects is even more difficult without transparency into how the production plan is evolving.

Our customizable Gantt chart is designed to reduce lead time while improving business processes. Use it at the outset of a project to create a project scope, make a plan and deploy tasks. Here are some ways that manufacturing teams utilize our Gantt chart:

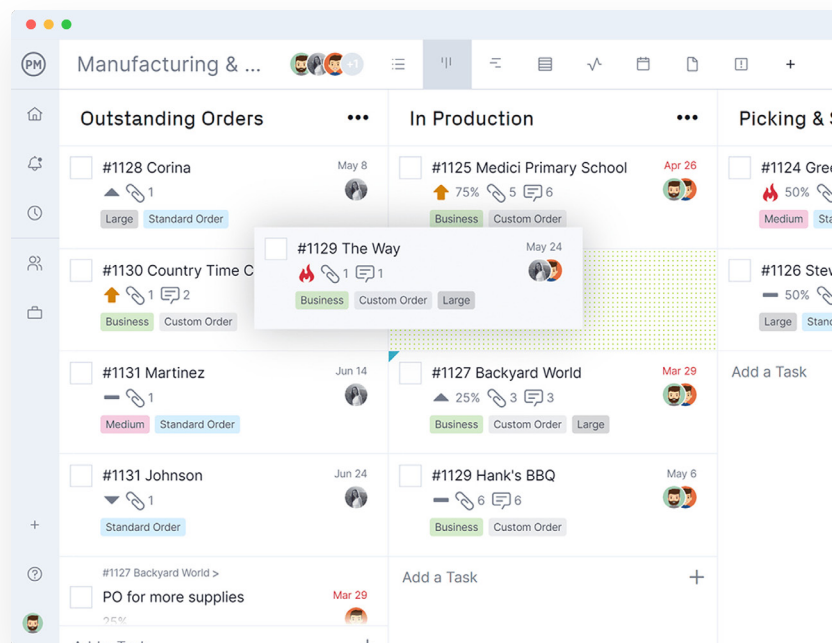


ALL	TASK NAME	WBS	PLANNED START...	PLANNED FINISH
1	Ideation	1	2/2/2023	2/7/2023
2	Market Research	1.1	2/2/2023	2/2/2023
3	Product Require...	1.2	2/3/2023	2/6/2023
4	Feasibility Analy...	1.3	2/7/2023	2/7/2023
5	Stakeholder Fee...	1.4	2/7/2023	2/7/2023
6	Design	2	2/8/2023	2/27/2023
7	Engineering Dra...	2.1	2/8/2023	2/13/2023
8	3D Rendering	2.2	2/14/2023	2/15/2023
9	3D Printed Proto...	2.3	2/16/2023	2/24/2023
10	Stakeholder Fee...	2.4	2/27/2023	2/27/2023
11	Prototyping	3	2/15/2023	3/1/2023
12	CNC Part Creati...	3.1	2/28/2023	2/28/2023
13	Product Assembly	3.2	3/1/2023	3/1/2023
14	Durability & Stre...	3.3	2/15/2023	2/23/2023
15	Pre-production	4	3/2/2023	7/13/2023
16	New Production ...	4.1	3/2/2023	3/6/2023
17	Supply Chain So...	4.2	3/7/2023	3/7/2023
18	Product Docume...	4.3	3/8/2023	7/11/2023
19	Translation Servi...	4.4	7/12/2023	7/12/2023
20	Production Oper...	4.5	7/13/2023	7/13/2023
21	Compliance	5	7/19/2023	7/21/2023

- ✓ Collaborating cross-functionally is difficult when multiple manufacturing sites are using disparate tools and processes
- ✓ Using different tools provides minimal transparency and slows production timelines and strategic collaborations
- ✓ Keeping track of files, data, parts and components is challenging without a single project reference point
- ✓ Integrating with other business tools and sharing documents is difficult, delaying the product's time to market

Collaborate in multiple project views

Teams can use the Gantt chart in conjunction with our other work views to execute processes and make real-time, data-driven decisions. All data populates instantly regardless of the project view. Managers, technicians and engineers can all work in the view of their choosing while data remains consistent, making it easy to stay updated with both small-scale and large-scale projects. For file sharing, simply navigate to our files view to see everything in one place.

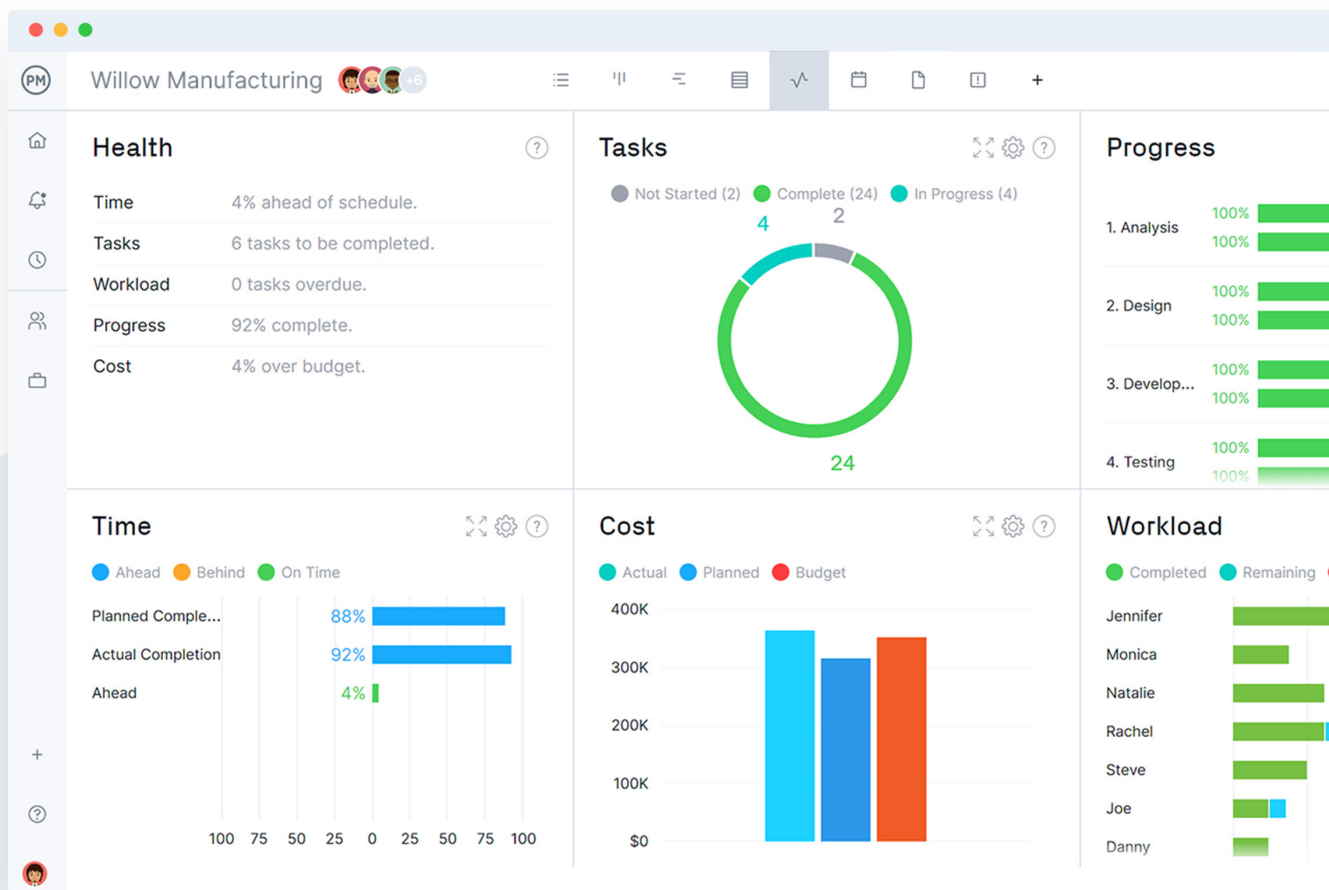


Project View	Value	Use Case
Task List	Manage projects and personal work	Address infrastructure needs and distribution operations
Board	Move tasks through visual, defined workflows	Ensure new products are meeting quality standards
Calendar	Plan for upcoming deadlines and organize schedules	Coordinate production schedules and timelines
Sheet	Keep track of task duration and planned vs. actual data	Determine realistic timelines and reallocate resources

Track project progress to minimize bottlenecks

Whether the production approach is agile or more traditional, it's essential to collect and reference data on productivity, efficiency and overall expenses. Unlike other tools, there's no need to use separate software to keep track of varied resources. Use ProjectManager's dashboard features that automatically collect and calculate project data.

Our project dashboards cover six project facets including health, tasks, progress, cost and workload. It's never been easier to oversee machinery performance, reallocate team workload or keep track of labor costs. For a bird's-eye view of all project data, use our portfolio dashboard to oversee the health of your projects across the board. In a few clicks, create reports with this data and share it with other manufacturing sites or relevant teams.

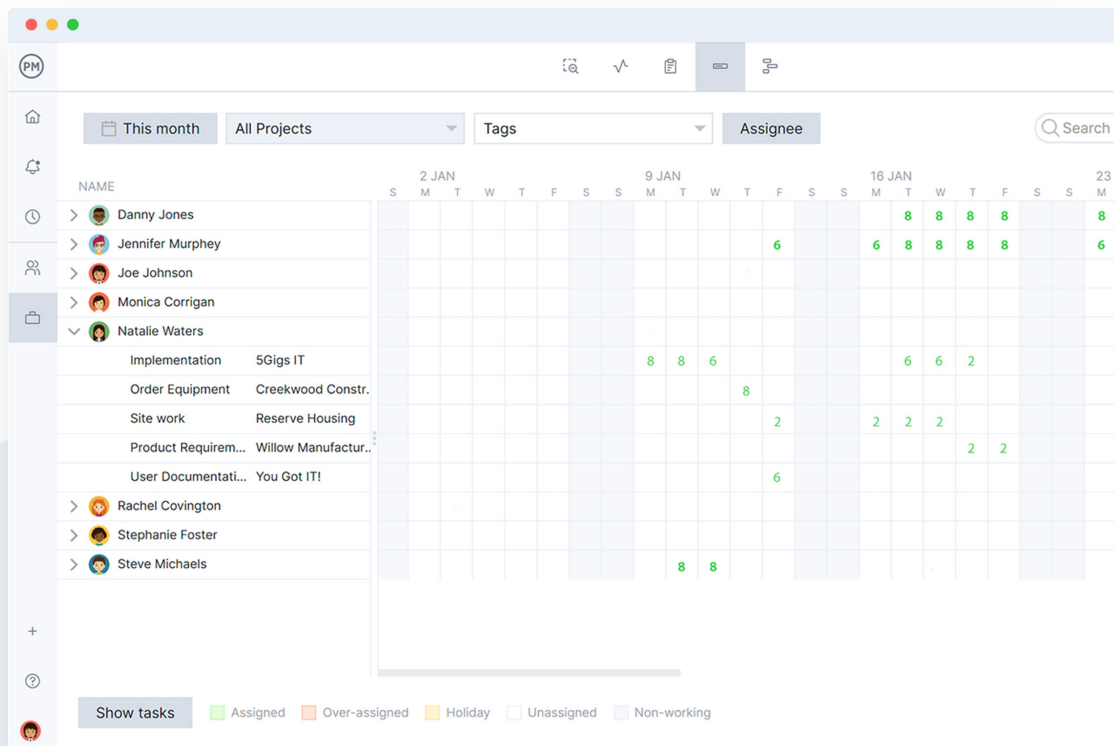


Manage teams and resources alongside projects

For manufacturers, nearly every facet of the business is considered a resource—employees, materials, software, facilities, equipment, etc. Manufacturing resource planning helps keep costs low and helps avoid future resource issues.

Real-time capacity planning is easy with our workload page. It automatically pulls in tasks from other views and provides insights into your planned vs. actual effort across the portfolio. Utilize the workload page for large-scale production projects with a fixed amount of resources such as raw materials or engineering labor hours. Production managers can use the workload page to quickly understand the workload and reallocate tasks to improve delivery times.

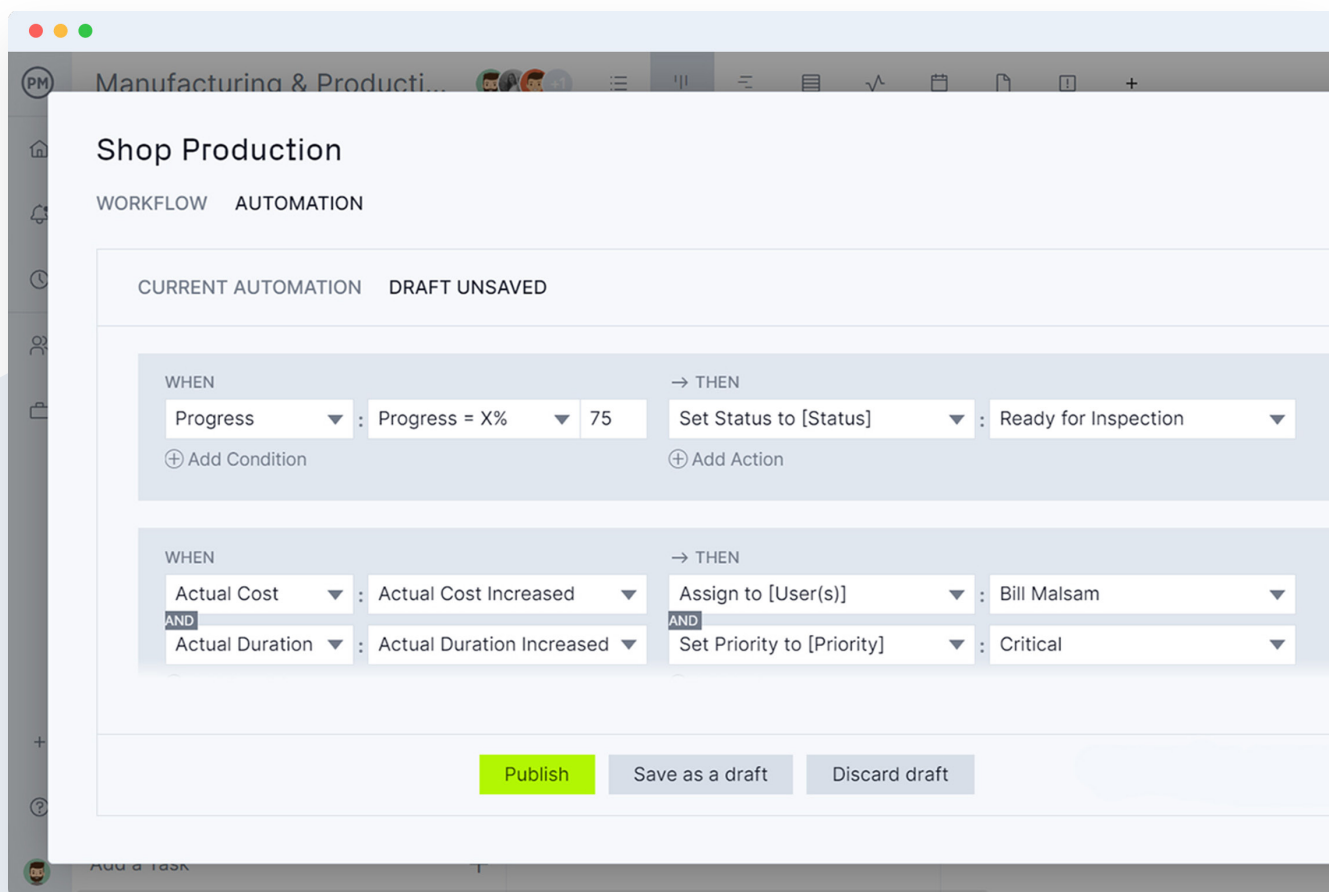
If there's no need to track planned effort, use the team page to keep track of assigned tasks. Here, there's a list of your team members and what their current workload is like and links to tasks and projects. Utilize it to see who is taking on more than they should and make adjustments as needed.



Reduce busywork with custom workflows and automation

To transform business processes and cut down on wasted time, use custom workflows and workflow automation. Establish specific workflows based on each project and set status approvers to ensure quality. Manufacturers can use these powerful features to keep production lines moving, establish strategic collaborations across departments and accelerate time to market. Plus, when using these powerful and scalable features, busywork subsides and innovation accelerates.

ProjectManager has workflows that automatically ping a team member, such as a PMO, if a status drops below a set threshold. This is particularly helpful for teams that are working across manufacturing sites. Or maybe a certain task approver needs to oversee tasks before changes to the production line can take place. There's no need to manually update or reassign tasks as teams can automate and streamline the risk management process.



Customer testimonials

“ProjectManager gave us more visibility. We’re able to track work from start to finish. Bottom line: ProjectManager saves us money.”



Dan McKay

Director at Metalmorphic Laser



“We can use ProjectManager to assign priorities on individual projects and show the relationship to the overall portfolio.”



Tim Berry

IT Director



Ready to try **ProjectManager**
for yourself?

[Start free trial](#)

Want to talk to our expert
sales team?

[Contact us](#)

